

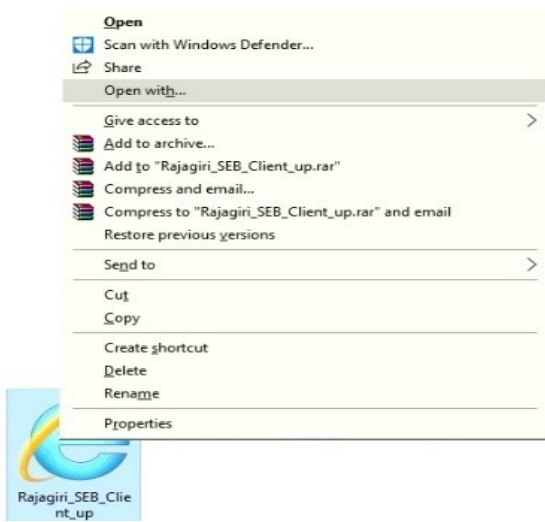
# Safe Exam browser

## Config. File Installation Guide

**Step 1:** Double click the SEB config. file.

**Only if Step 1 is not working, follow the remaining steps.**

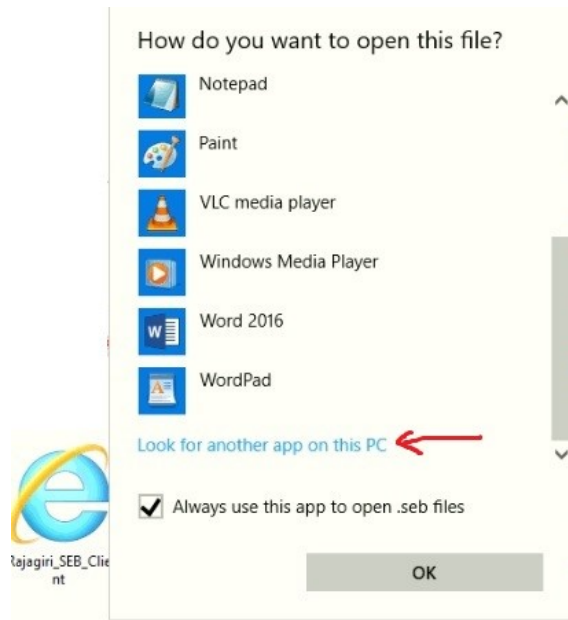
**Step 2:** Right-click on the Downloaded SEB config file and select "Open with..".



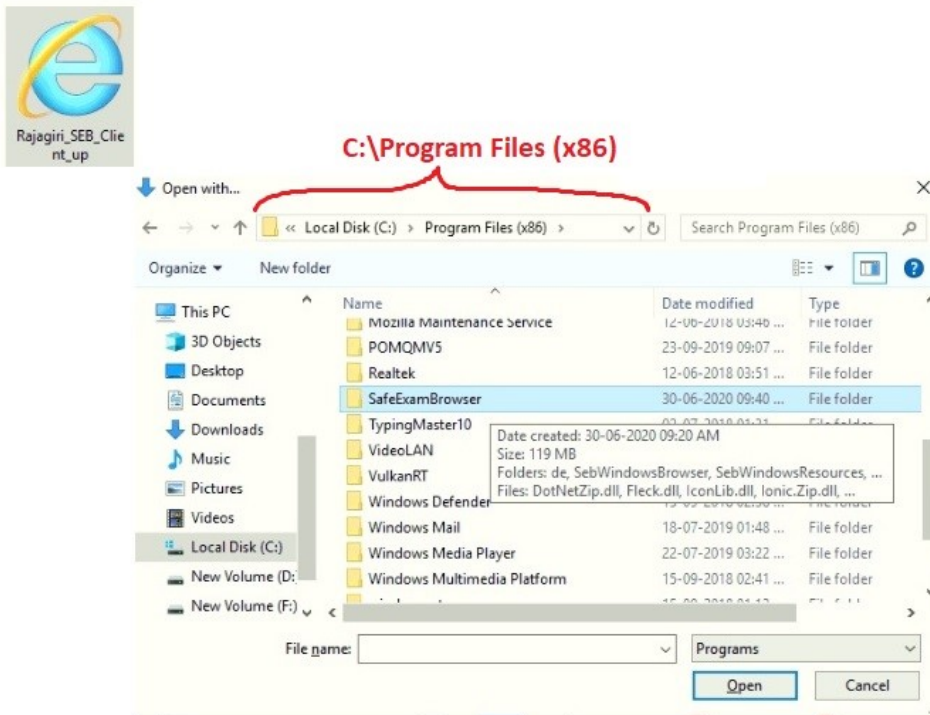
**Step 2:** Click "More apps"



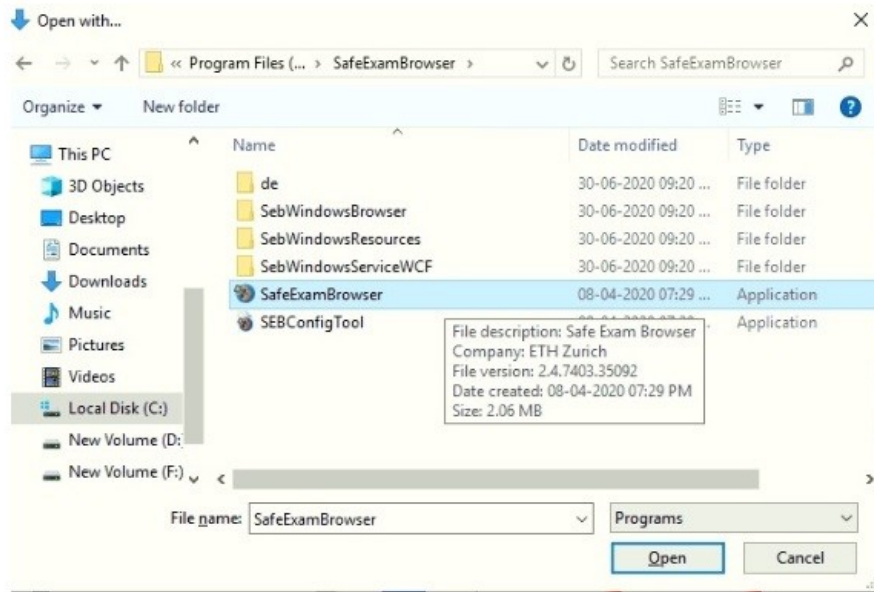
**Step 3:** Scroll down and Click “Look for another app on this PC”



**Step 4:** in the address bar : go to Local Disk : C -> Program Files(x86) “ C:\Program Files (x86) “, open “SafeExamBrowser” folder.



**Step 5:** Select “SafeExamBrowser” and Open . Done



Test Your Safe Exam Browser:

Windows App Search -> “Safe Exam Browser”

